



Texas Department of State  
Health Services

# Young Adult Participation in ImmTrac2

***Texas Immunization Conference 2017***

***Presenter: Deborah Copas, Education & Training Analyst***

## Overview



Texas Department of State  
Health Services

- Program Background
- Outreach Efforts
- Outreach Coverage Areas
- Young Adult Opt-in Data
- Successes & Challenges

# Texas Immunization Registry

## Program Background

As an opt-in system, two types of legal consent exist:

- Parent or legal guardian consent for children (birth through 17 years old)
- Adult consent for self (18th birthday and older)



12/4/2017

ImmTrac2 – Young Adult Participation

3

# Texas Immunization Registry

## Program Background, cont.

- Childhood consent ends the day the person turns 18 years old (becomes a legal adult).



12/4/2017

ImmTrac2 – Young Adult Participation

4

## Texas Immunization Registry

### Program Background, cont.

- Childhood consent ends the day the person turns 18 years old (becomes a legal adult).
- Childhood history in ImmTrac is no longer accessible, except to certain DSHS staff (aka "Pending Adults").



12/4/2017

ImmTrac2 – Young Adult Participation

5

## Texas Immunization Registry

### Program Background, cont.

- Childhood consent ends the day the person turns 18 years old (becomes a legal adult).
- Childhood history in ImmTrac is no longer accessible, except to certain DSHS staff (aka "Pending Adults").
- Newly entered adults are flagged as possible matches for merging with childhood history.



12/4/2017

ImmTrac2 – Young Adult Participation

6

# Texas Immunization Registry

## Texas Law (2015 Impact)

Texas law and department rules establish that:

- The childhood record is maintained until the 26th birthdate.
- Two attempts are made to notify the young person at 17 to 18 years old.
- Two attempts are made to notify the young person at 25 years old.



12/4/2017

ImmTrac2 – Young Adult Participation

7

# Outreach Efforts




## A Three-tiered Approach

12/4/2017

ImmTrac2 – Young Adult Participation

8

# Outreach Efforts



TEXAS  
Health and Human  
Services

Texas Department of State  
Health Services

### Statewide

- DSHS mails notices monthly to 18 year olds.
- ImmTrac2 produces bi-monthly reports to regions and health departments on 17-year-old participants for targeted outreach.

### Health Regions

- ImmTrac Coordinators at each Health Service Region do targeted outreach in those areas where no County/City outreach exists.

### County/City HDs

- ImmTrac Program Outreach Specialists at 50 County/City public health departments do targeted outreach in their jurisdictions.

12/4/2017      ImmTrac2 – Young Adult Participation      9

# Outreach Coverage Areas

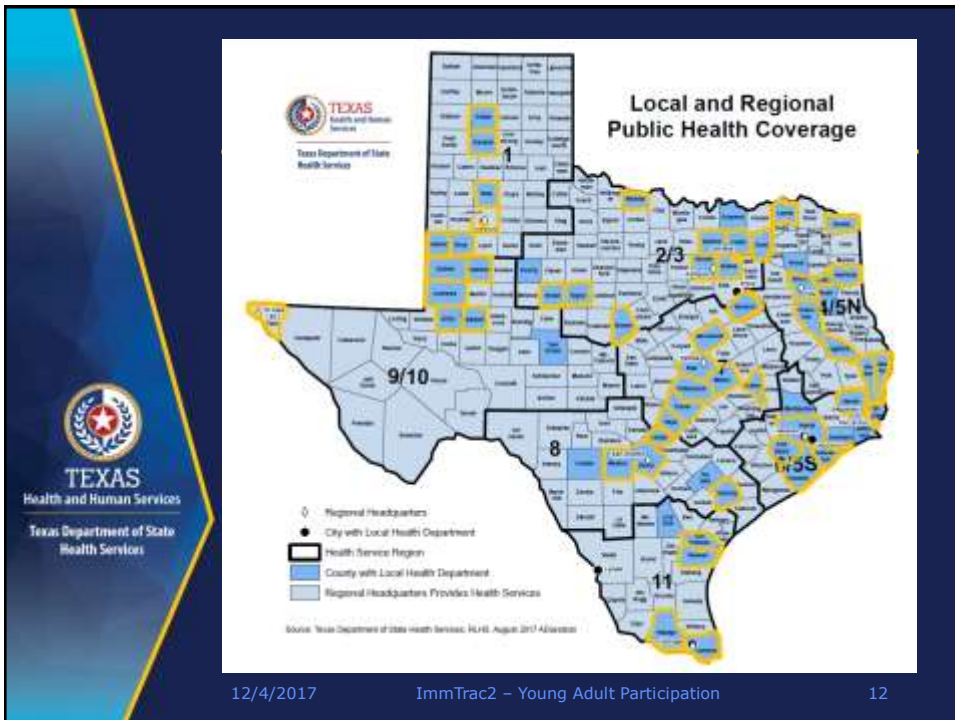
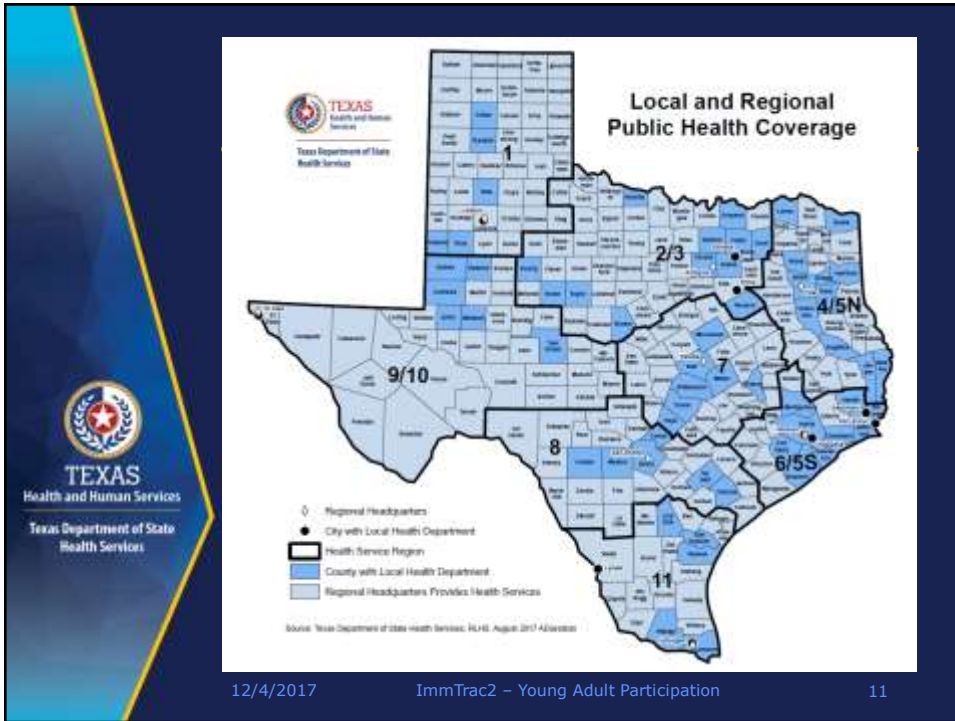


TEXAS  
Health and Human  
Services

Texas Department of State  
Health Services

## Where are our partners located?

12/4/2017      ImmTrac2 – Young Adult Participation      10






# Young Adult Opt-In

TEXAS Health and Human Services  
Texas Department of State Health Services

## Recent Data - April to Nov 2017

12/4/2017 ImmTrac2 – Young Adult Participation 13



# Young Adult Opt-In

ImmTrac2 activity as of November 1, 2017

DSHS Region 1 (Panhandle)	Clients	Immunizations
Consented Young Adults (childhood data restored)	302	7,684
Pending Adults (to be purged at 26Y)	35,286	654,537

DSHS Region 2/3 (North Texas)	Clients	Immunizations
Consented Young Adults (childhood data restored)	768	18,407
Pending Adults (to be purged at 26Y)	269,552	4,257,612

12/4/2017 ImmTrac2 – Young Adult Participation 14



## Young Adult Opt-In

ImmTrac2 activity as of November 1, 2017

DSHS Region 4/5N (East Texas)	Clients	Immunizations
Consented Young Adults (childhood data restored)	369	8,629
Pending Adults (to be purged at 26Y)	52,093	927,491

DSHS Region 6/5S (Southeast Texas)	Clients	Immunizations
Consented Young Adults (childhood data restored)	1,356	33,838
Pending Adults (to be purged at 26Y)	266,679	4,739,642



12/4/2017

ImmTrac2 – Young Adult Participation

15

## Young Adult Opt-In

ImmTrac2 activity as of November 1, 2017

DSHS Region 7 (Central Texas)	Clients	Immunizations
Consented Young Adults (childhood data restored)	457	12,328
Pending Adults (to be purged at 26Y)	97,373	1,763,811

DSHS Region 8 (Hill Country/SW Texas)	Clients	Immunizations
Consented Young Adults (childhood data restored)	317	6,217
Pending Adults (to be purged at 26Y)	105,691	1,553,967



12/4/2017

ImmTrac2 – Young Adult Participation

16



## Young Adult Opt-In

ImmTrac2 activity as of November 1, 2017

DSHS Region 9/10 (West Texas)	Clients	Immunizations
Consented Young Adults (childhood data restored)	411	11,259
Pending Adults (to be purged at 26Y)	79,895	1,551,726

DSHS Region 11 (South Texas)	Clients	Immunizations
Consented Young Adults (childhood data restored)	835	20,461
Pending Adults (to be purged at 26Y)	133,879	2,449,208



12/4/2017

ImmTrac2 – Young Adult Participation

17

## Young Adult Opt-In

ImmTrac2 activity as of November 1, 2017

Other/Statewide	Clients	Immunizations
Consented Young Adults (childhood data restored)	19,553	469,954
Pending Adults (to be purged at 26Y)	129,683	2,523,634


Recent TOTALS	Clients	Immunizations
Consented Young Adults (childhood data restored)	24,368	588,777
Pending Adults (to be purged at 26Y)	1,170,131	20,421,628



12/4/2017

ImmTrac2 – Young Adult Participation

18




TEXAS  
Health and Human  
Services

Texas Department of State  
Health Services

# Young Adult Opt-In

## Successes & Challenges

12/4/2017 ImmTrac2 – Young Adult Participation 19



TEXAS  
Health and Human Services

Texas Department of State  
Health Services

## High School Outreach

- **SUCCESS:** Collaborations in high schools where health departments give presentations and collect consent from high school seniors.
- **CHALLENGE:** Capturing consent after a student turns 18 years old.
- **CHALLENGE:** Training authorized school staff to advocate and do consent data entry for their 18-year-old students.

12/4/2017 ImmTrac2 – Young Adult Participation 20

## Provider Outreach

- **SUCCESS:** Clinician and intake staff engagement where offering registry consent to patients is routine.
- **CHALLENGE:** Embracing registry consent at every patient encounter.
- **CHALLENGE:** Developing data entry routines for entering consented clients into the registry.



TEXAS  
Health and Human Services  
Texas Department of State  
Health Services

12/4/2017

ImmTrac2 – Young Adult Participation

21

## Provider Outreach

- **SUCCESS:** Provider sponsorship of EHR configuration for capturing & reporting electronic consent.
- **CHALLENGE:** Developing EHR technology engagement & recognition of responsibility for consent configuration.




TEXAS  
Health and Human Services  
Texas Department of State  
Health Services

12/4/2017

ImmTrac2 – Young Adult Participation

22



**TEXAS**  
Health and Human  
Services

Texas Department of State  
Health Services

# Young Adult Opt-In

## 2018 & Beyond:

- Robust collaborations with universities and community colleges through campus health services departments.
- Training advocates in public health & clinical healthcare student communities.

12/4/2017 ImmTrac2 – Young Adult Participation 23



**TEXAS**  
Health and Human  
Services

Texas Department of State  
Health Services

# Thank you

---

**Deborah Copas**  
Education & Training Analyst, Data Quality Team  
[Deborah.Copas@dshs.texas.gov](mailto:Deborah.Copas@dshs.texas.gov)

12/4/2017 ImmTrac2 – Young Adult Participation 24